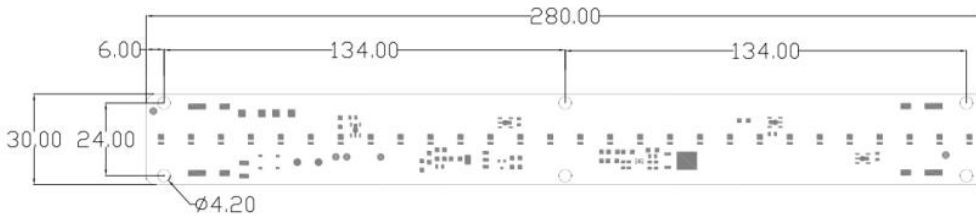


- AC 230V input directly
- EMI compliance
- THDI<15%
- Surge protection: 2.5KV
- High-pot level: 1.5KV
- CRI: 80/90 options



General information

P/N	Power	Voltage	PF	Efficiency	CRI	CCT	THD	Dimension
	W	V	-	Lm/w	Ra	K	%	
RL-HM280x30A2801H009-827TB	9	230	0.95	110	80	2700	<10	280*30
RL-HM280x30A2801H009-830TB	9	230	0.95	115	80	3000	<10	280*30
RL-HM280x30A2801H009-840TB	9	230	0.95	120	80	4000	<10	280*30
RL-HM280x30A2801H009-850TB	9	230	0.95	120	80	5000	<10	280*30
RL-HM280x30A2801H009-857TB	9	230	0.95	120	80	5700	<10	280*30
RL-HM280x30A2801H016-827TB	16	230	0.95	100	80	2700	<10	280*30
RL-HM280x30A2801H016-830TB	16	230	0.95	105	80	3000	<10	280*30

RL-HM280x30A2801H016-840TB	16	230	0.95	110	80	4000	<10	280*30
RL-HM280x30A2801H016-850TB	16	230	0.95	110	80	5000	<10	280*30
RL-HM280x30A2801H016-857TB	16	230	0.95	110	80	5700	<10	280*30

Note:

1. Various CCT available (2700-6500K); CRI70/80/90
2. Typical optical-electronic parameters above