

D25mm 360°black Neon lights Data Sheet



- SPI neon lights, SM6603ST3 adopts single-line return to zero code SID data protocol, stable signal, strong anti-interference ability
- Unique optical light distribution structure design, uniform surface light without shadow
- can support up to 5 meters of shipment
- Silicone extrusion molding, food grade silicone material, the surface is sprayed and comfortable to touch
- Waterproof grade IP67 • 3 years warranty

Technologies

- ON/OFF,Dali,PWM,O-10V,DMX2PWM Dimmer,Radio Frequency control

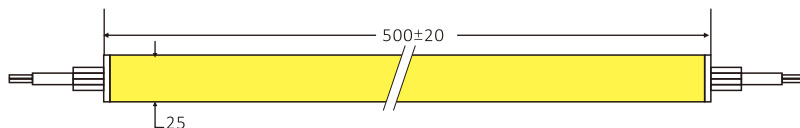
Applicatio

- This product is suitable for hotels, KTVs, homes, cabinets, courtyards, etc., for contouring, atmosphere lightingdecorative lighting and other purposes.

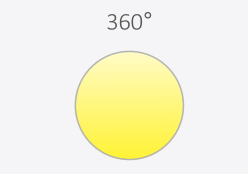
Color Options



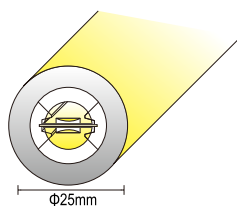
Dimensions



Beam Angle



Sectional drawing



Recommended Accessories



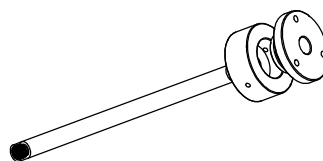
Straight exit end cap



Side exit end cap



End cap



Hoisting parts

Product Specifications

P/N	LED Quantity	CCT K	CRI	LED (SM)	LUMENS (lm/m)	Vf. (V.)	Current (mA/M)	Power (W/M)	Cut Length (MM)	Max Run (M)
RL-FV2408280283516-SPI-FWCD25 (SPI 10 image decimal point)	2835 RGB	R:625	/	168	375	24	666	16	83.5	5
		G:525								
		B:465								

Other Specifications

Protection grade	IP67
Working temperature (°C)	-25~+60
Standard length (°C)	-25~+70
Maximum cascade length(m)	5
Maximum cascade length (m)	5
weight	/

Remark

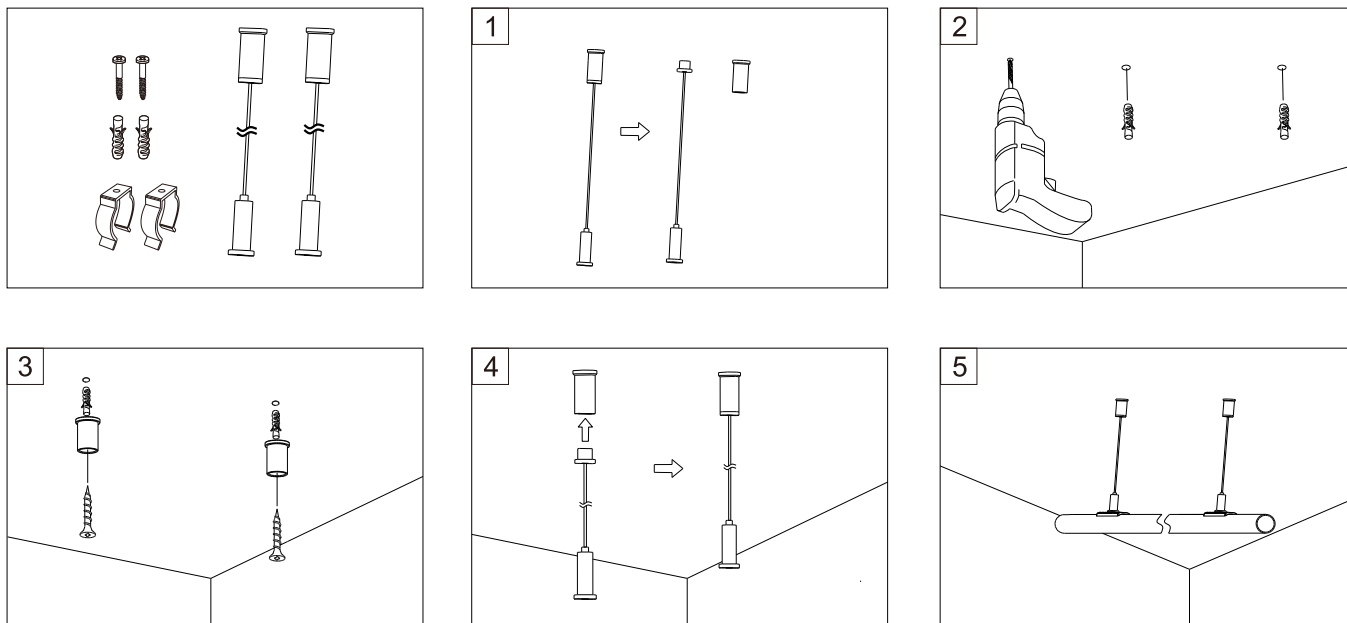
- The test environment temperature is 25±2°C;
- The above data are typical values, the actual parameters of the product may be different from the typical data; the data is subject to change without notice;
- The above "/" means that this parameter is not required for the time being.

Applied Standards



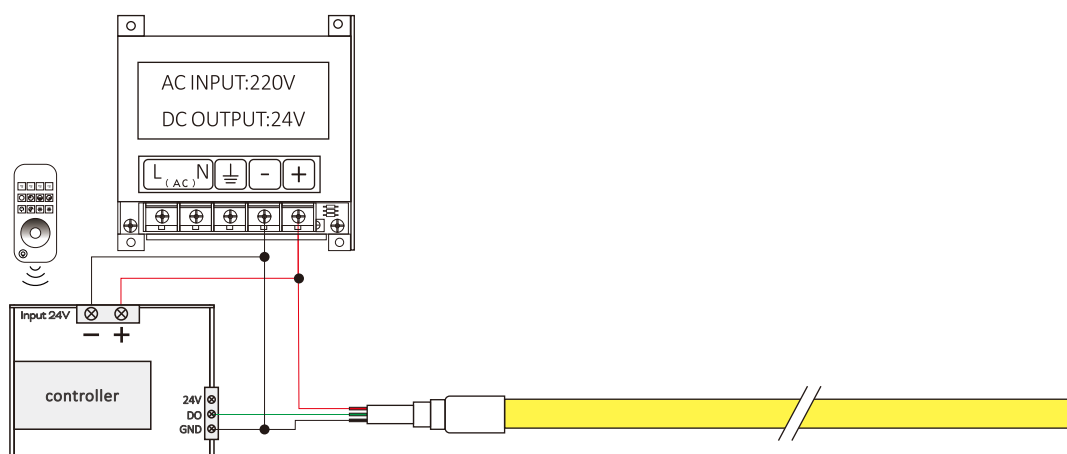
Mounting with aluminium profiles

Install with the screws provided. Do not use screws of other types or sizes that do not meet requirements.

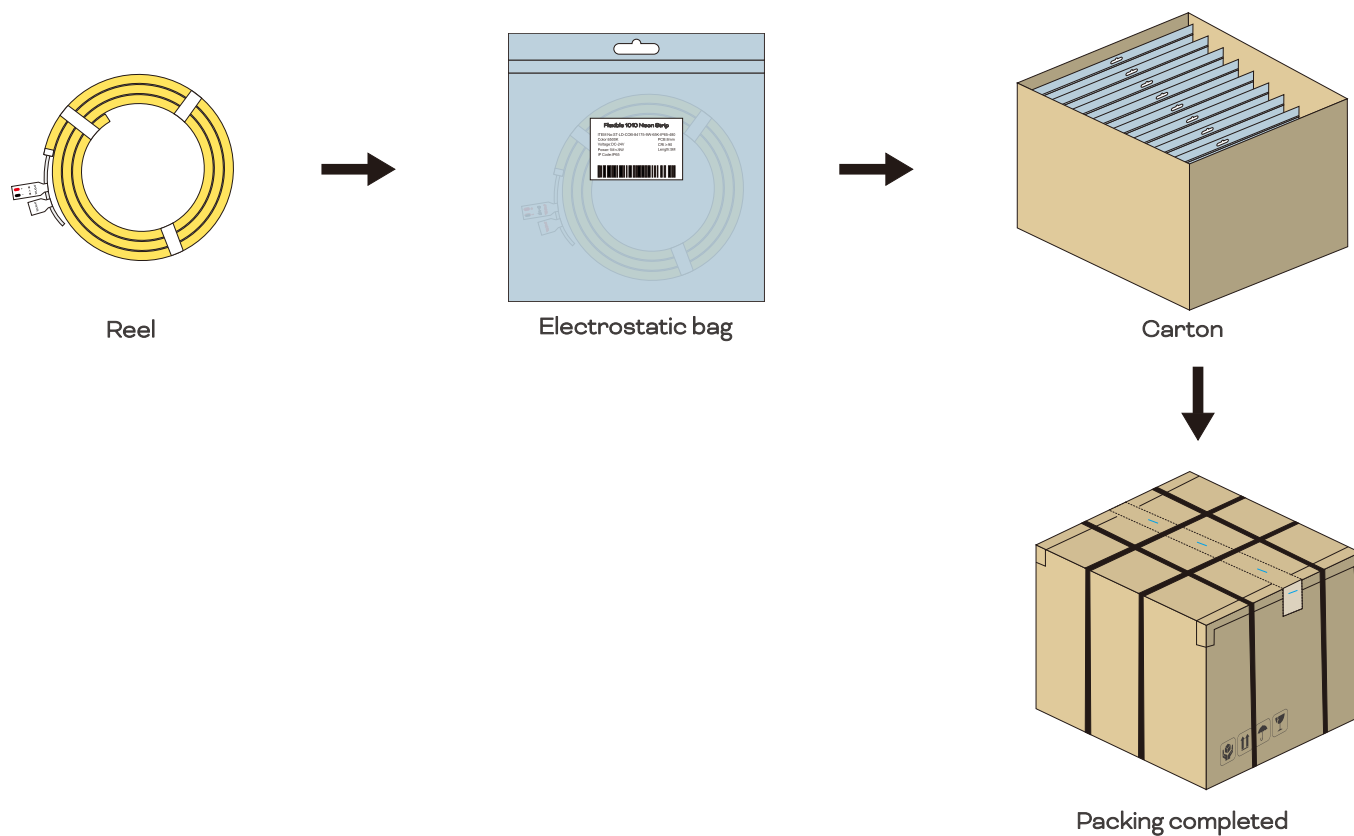


Schematic diagram of electrical connection

SPI wiring diagram: Power + controller + light belt connection mode



Package



Note : The above-mentioned packaging quantity and weight are only for the packaging method shown in the figure. There will be differences in the number and weight of packaging for other packaging methods, and the actual product shall prevail.



Specialized
LED Strip Manufacturer

Shenzhen
Relight Technology Co.,Ltd

6th Floor, Building A, Guancheng Industrial Park, Gongming Town,
Guangming District, Shenzhen, China

Tel: 86 0755 3369 1713
Web: www.relight-tech.com
E-mail: Sales@relight-tech.com