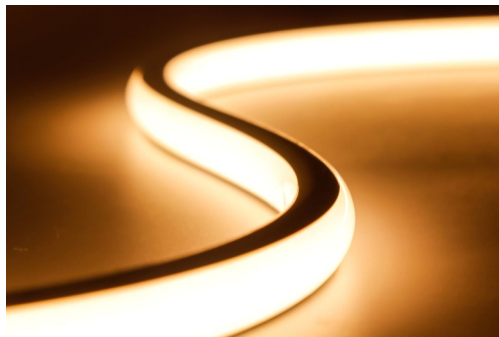


D16mm Dual-Side Illumination Neon Strip Data Sheet



- D16mm Dual-Side Illumination
- Uniform illumination, no dark spots, soft and smooth light, high-quality texture, creating a comfortable environment.
- can support up to 5 meters of shipment
- Silicone Extrusion Technology – Engineered with extrusion-molded silicone tubing process using food-grade material
- Waterproof grade IP67 • 3 years warranty

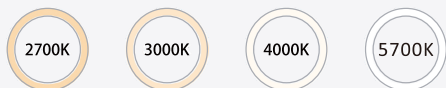
Technologies

- ON/OFF,Dali,PWM,O-10V,DMX2PWM
Dimmer,Radio Frequency control

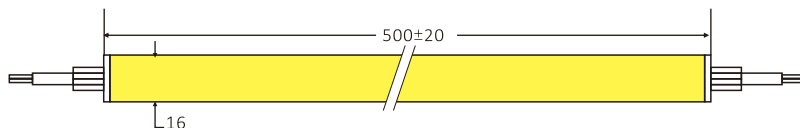
Applicatio

- Engineered for architectural projects, exterior enhancement, and decorative illumination systems in high-rise buildings, hotels, commercial centers, and urban landscapes,

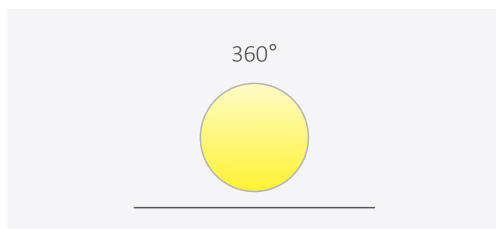
Color Options



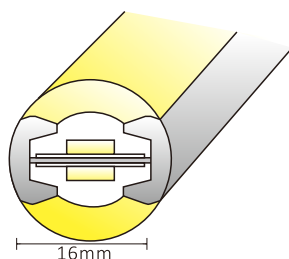
Dimensions



Beam Angle



Sectional drawing



Recommended Accessories



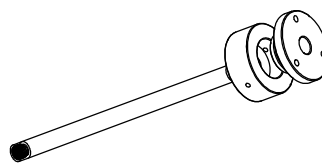
Straight exit end cap



Side exit end cap



End cap



Hoisting parts

Product Specifications

P/N	LED Quantity	CCT K	CRI	LED (SM)	LUMENS (lm/m)	Vf. (V)	Current (mA/M)	Power (W/M)	Cut Length (MM)	Max Run (M)
RL-FV2410360283512-830-FWCD16	2835	2700	/	360	960	24	500	12	33.3	5
		3000			960					
		4000			1020					
		5700			1020					

Other Specifications

Protection grade	IP67
Working temperature (°C)	-25~+60
Standard length (°C)	-25~+70
Maximum cascade length(m)	5
Maximum cascade length (m)	5
weight	/

Remark

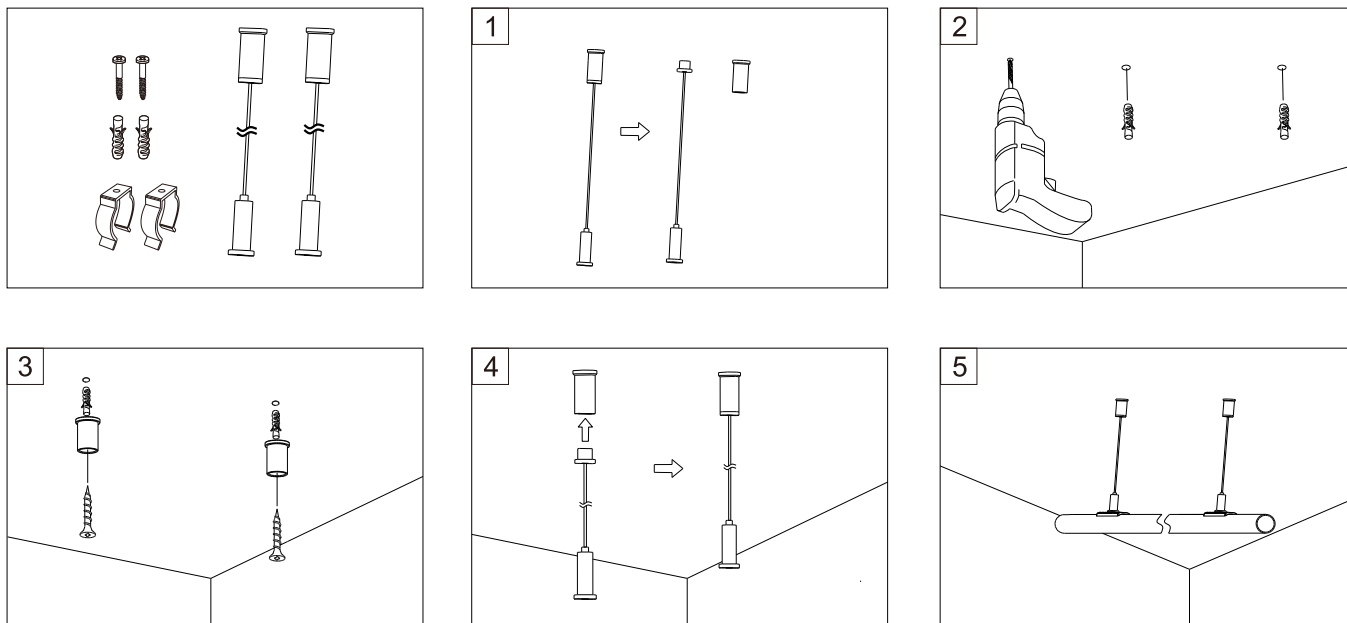
- The test environment temperature is 25±2°C;
- The above data are typical values, the actual parameters of the product may be different from the typical data; the data is subject to change without notice;
- The above "/" means that this parameter is not required for the time being.

Applied Standards



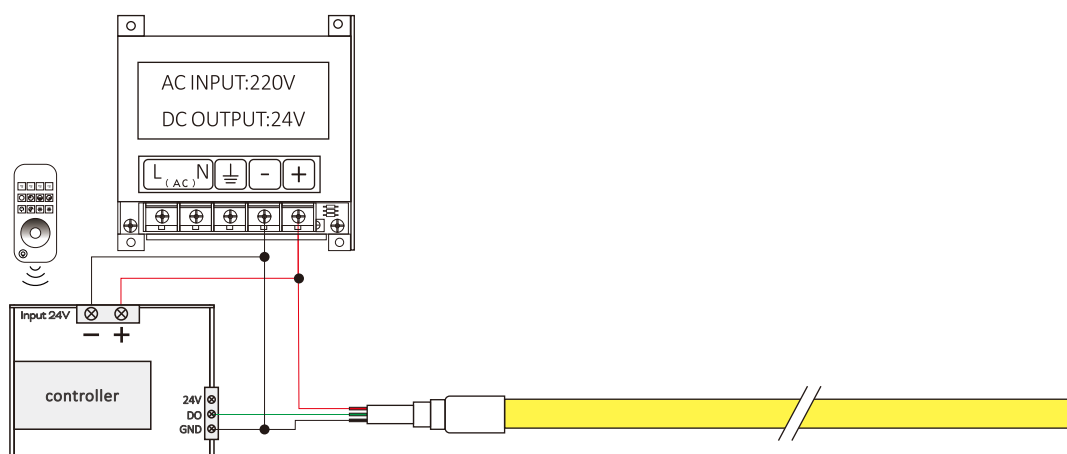
Mounting with aluminium profiles

Install with the screws provided. Do not use screws of other types or sizes that do not meet requirements.

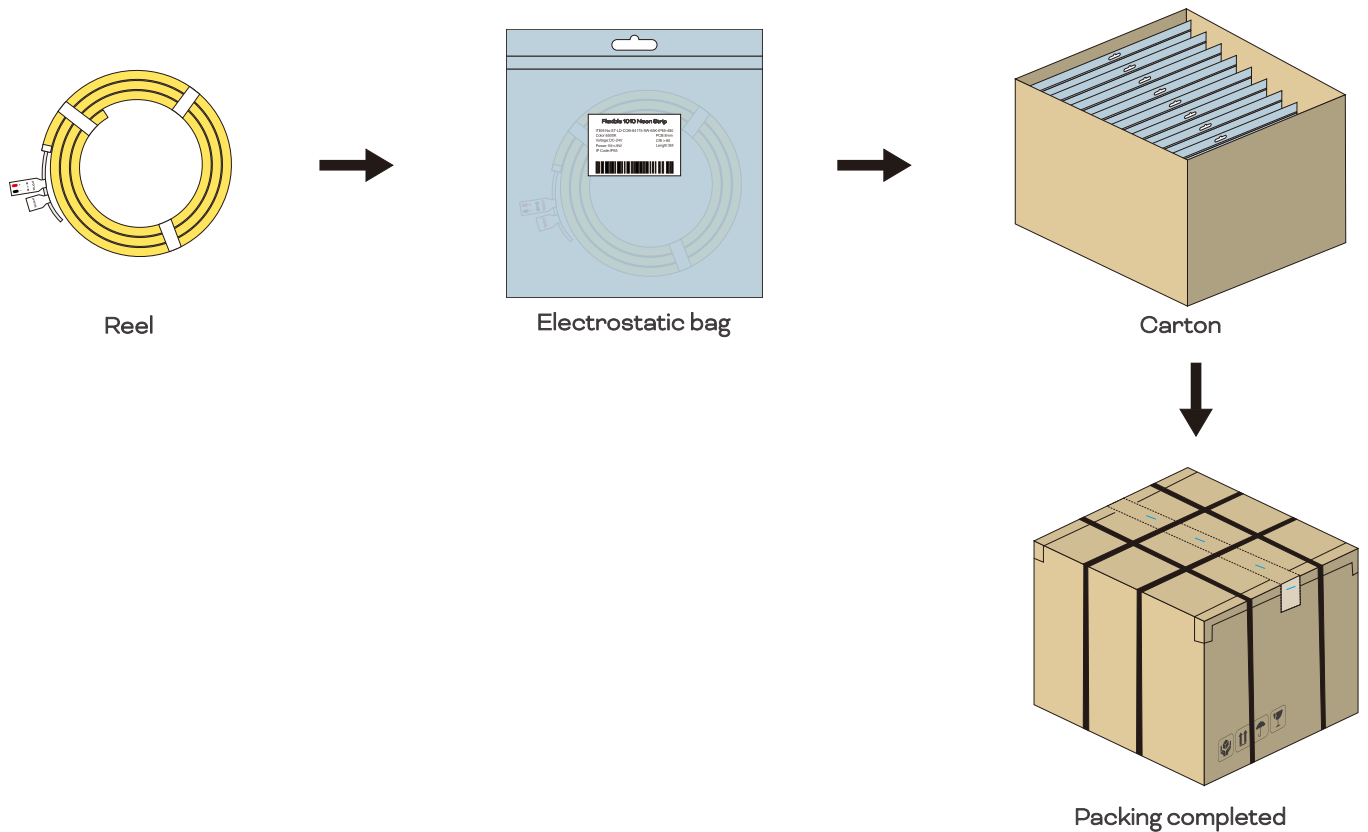


Schematic diagram of electrical connection

SPI wiring diagram: Power + controller + light belt connection mode



Package



Note : The above-mentioned packaging quantity and weight are only for the packaging method shown in the figure. There will be differences in the number and weight of packaging for other packaging methods, and the actual product shall prevail.



Specialized
LED Strip Manufacturer

Shenzhen
Relight Technology Co.,Ltd

6th Floor, Building A, Guancheng Industrial Park, Gongming Town,
Guangming District, Shenzhen, China

Tel: 86 0755 3369 1713
Web: www.relight-tech.com
E-mail: Sales@relight-tech.com